

Bright Star

By Steve Martin and Edie Brickell

Director: Kristine Holtvedt

Technical Director: Ellen McLean

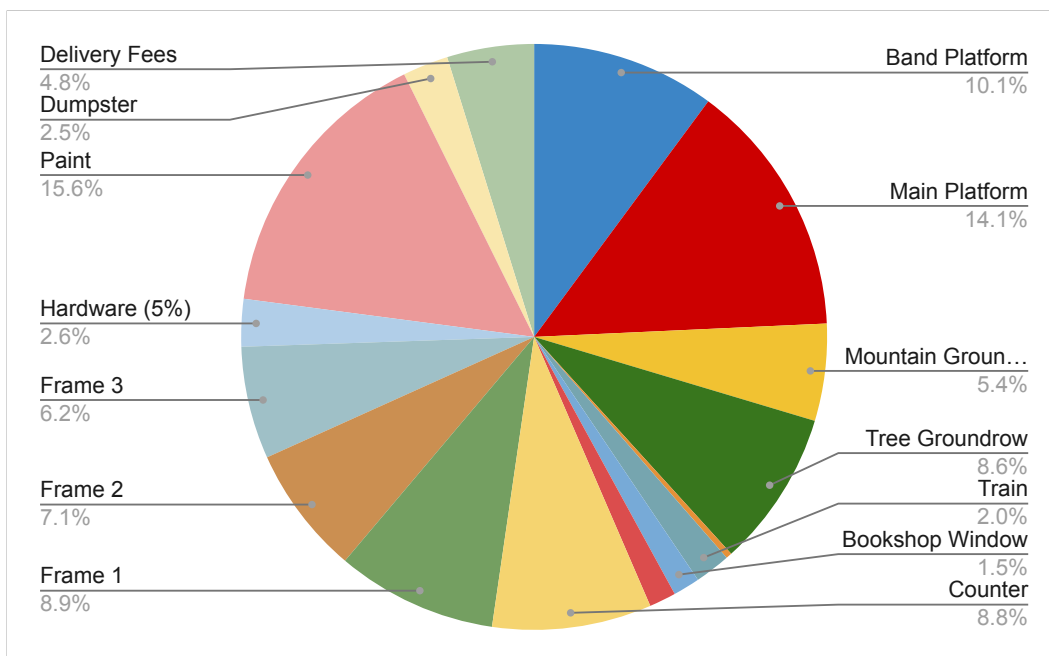
Scenic Designer: Sydney Hagen

Assistant Technical Director: Elle Bishop

Cost Estimate

<u>Page</u>	<u>Elements</u>	<u>As Designed</u>	<u>Percentage of Total</u>
2	Band Platform	\$422.11	10.13%
3	Main Platform	\$589.14	14.14%
4	Mountain Groundrow	\$223.15	5.36%
5	Tree Groundrow	\$359.70	8.63%
6	Banner	\$13.64	0.33%
7	Train	\$82.04	1.97%
8	Bookshop Window	\$61.58	1.48%
9	ASJ Sign	\$61.58	1.48%
10	Counter	\$366.17	8.79%
11	Frame 1	\$369.38	8.87%
12	Frame 2	\$295.50	7.09%
13	Frame 3	\$258.57	6.21%
	Hardware (5%)	\$108.96	2.62%
	Paint	\$650.00	15.60%
	Dumpster	\$105.00	2.52%
	Delivery Fees	\$200.00	4.80%
TOTAL		\$4,166.51	100.00%

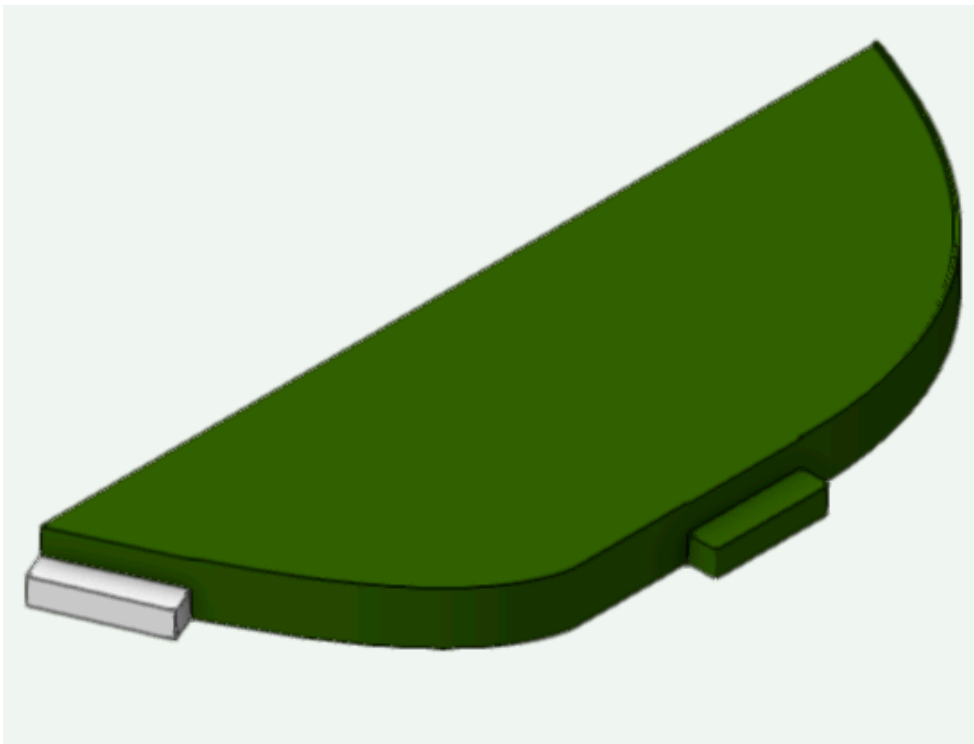
BUDGET FOR SHOW	\$4,500.00	
AMOUNT OVER	-\$333.50	0.93%



<i>Bright Star</i>	
By Steve Martin and Edie Brickell	
Director: Kristine Holtvedt	Technical Director: Ellen McLean
Scenic Designer: Sydney Hagen	Assistant Technical Director: Elle Bishop

2. Band Platform

<u>Item/Material</u>	<u>Amount</u>	<u>Price per Item</u>	<u>Total Price</u>	<u>Notes</u>
<i>Platform Top</i>				
4x4 Triscuits	5	\$0.00	\$0.00	
3/4" Ply	3	\$45.28	\$135.84	
Masonite	3	\$0.00	\$0.00	From Faustus
Masonite	2	\$22.98	\$45.96	
<i>Platform Stud-Walls</i>				
2x4x16	15	\$6.75	\$101.25	
<i>Platform Facing</i>				
Masonite	2	\$22.98	\$45.96	
1x6x16	1	\$31.75	\$31.75	
<i>Platform Steps</i>				
Steps	2	\$0.00	\$0.00	
Masonite	1	\$22.98	\$22.98	
TOTAL			\$383.74	
10% Contingency			\$38.37	
TOTAL WITH CONTINGENCY			\$422.11	



Bright Star	
By Steve Martin and Edie Brickell	
Director: Kristine Holtvedt	Technical Director: Ellen McLean
Scenic Designer: Sydney Hagen	Assistant Technical Director: Elle Bishop

3. Main Platform

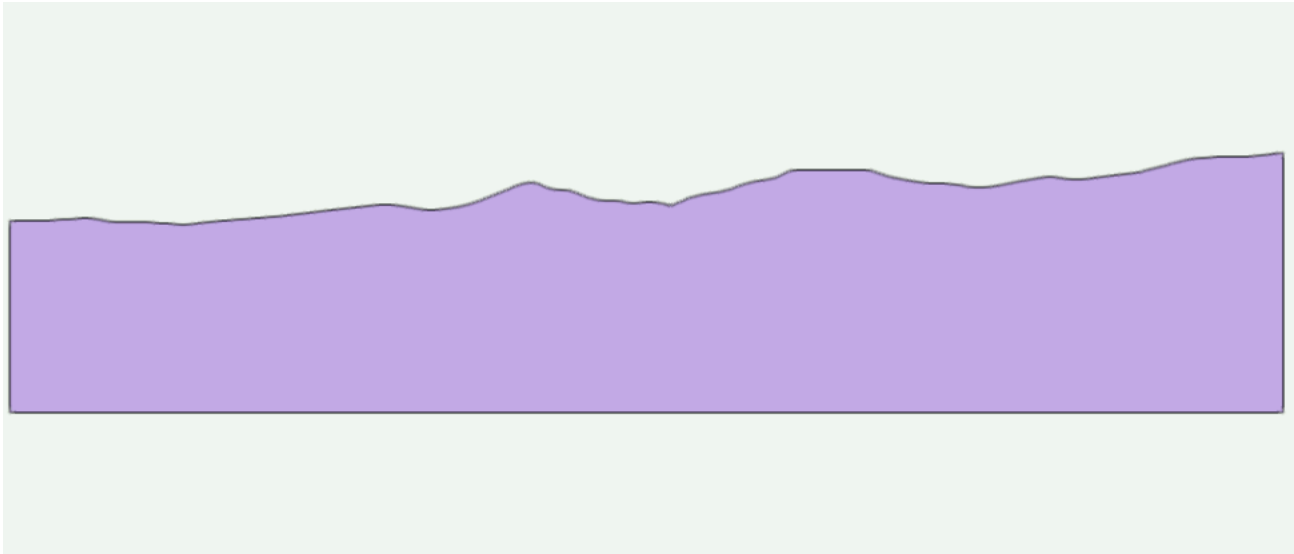
<i>Item/Material</i>	<i>Amount</i>	<i>Price per Item</i>	<i>Total Price</i>	<i>Notes</i>
Base				
4x4 Triscuits	5	\$0.00	\$0.00	Stock
Tri-Swivel Casters	12	\$0.00	\$0.00	Stock
Breaks	4	\$0.00	\$0.00	Stock
3/4" Ply	1	\$45.28	\$45.28	
2x4x16	8	\$6.75	\$54.00	
Hinge	1	\$0.00	\$0.00	Stock
Masonite	3	\$22.98	\$68.94	
A				
4x4x16	3	\$19.99	\$59.97	
L Brackets		\$0.00	\$0.00	Stock
B				
4x4x16	4	\$19.99	\$79.96	
L Brackets		\$0.00	\$0.00	Stock
Door	1	\$0.00	\$0.00	Stock
Hinges	3	\$0.00	\$0.00	Stock
Door Knob	1	\$0.00	\$0.00	Stock
3/4" Ply	3	\$33.58	\$100.74	
C				
2x4x16	1	\$6.75	\$6.75	
4x4x16	6	\$19.99	\$119.94	
TOTAL			\$535.58	
10% Contingency			\$53.56	
TOTAL WITH CONTINGENCY			\$589.14	



<i>Bright Star</i>	
By Steve Martin and Edie Brickell	
Director: Kristine Holtvedt	Technical Director: Ellen McLean
Scenic Designer: Sydney Hagen	Assistant Technical Director: Elle Bishop

4. Mountian Groundrow

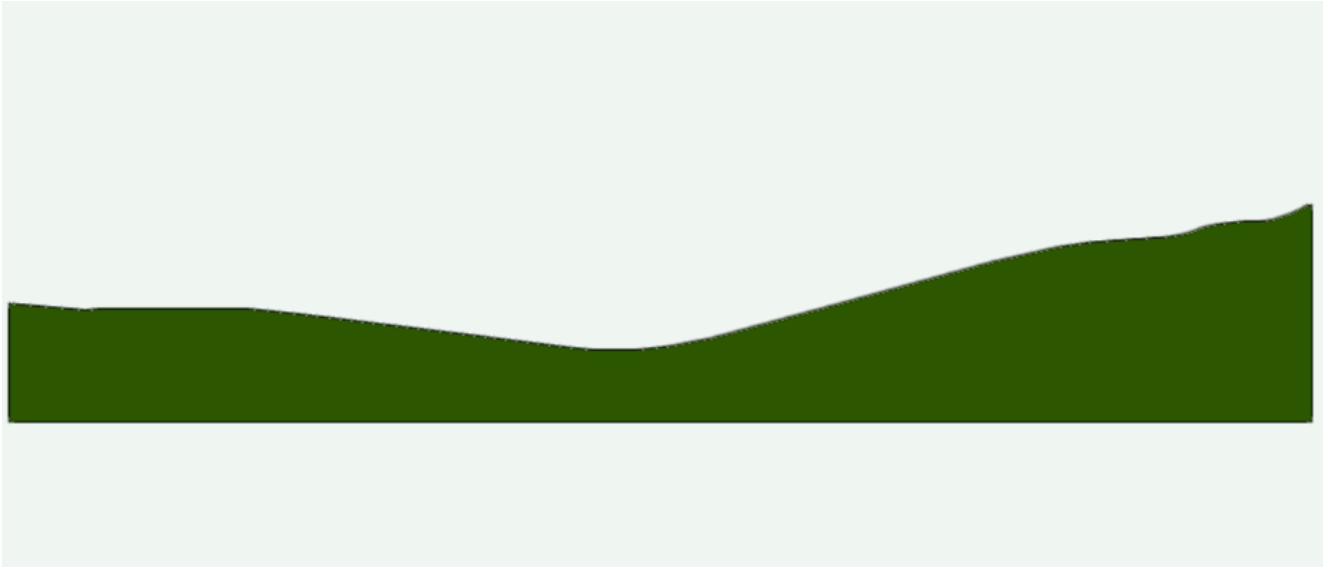
<i>Item/Material</i>	<i>Amount</i>	<i>Price per Item</i>	<i>Total Price</i>	<i>Notes</i>
Flats				
4'x14' Flat	8	\$0.00	\$0.00	
4'x10' Flat	1	\$0.00	\$0.00	
Lauan	3	\$27.38	\$82.14	
1x3x8'	9	\$2.22	\$19.98	
3/4" Ply	3	\$33.58	\$100.74	
Jacks				
Metal Jacks	6	\$0.00	\$0.00	
TOTAL			\$202.86	
10% Contingency			\$20.29	
TOTAL WITH CONTINGENCY			\$223.15	



Bright Star	
By Steve Martin and Edie Brickell	
Director: Kristine Holtvedt	Technical Director: Ellen McLean
Scenic Designer: Sydney Hagen	Assistant Technical Director: Elle Bishop

5. Tree Groundrow

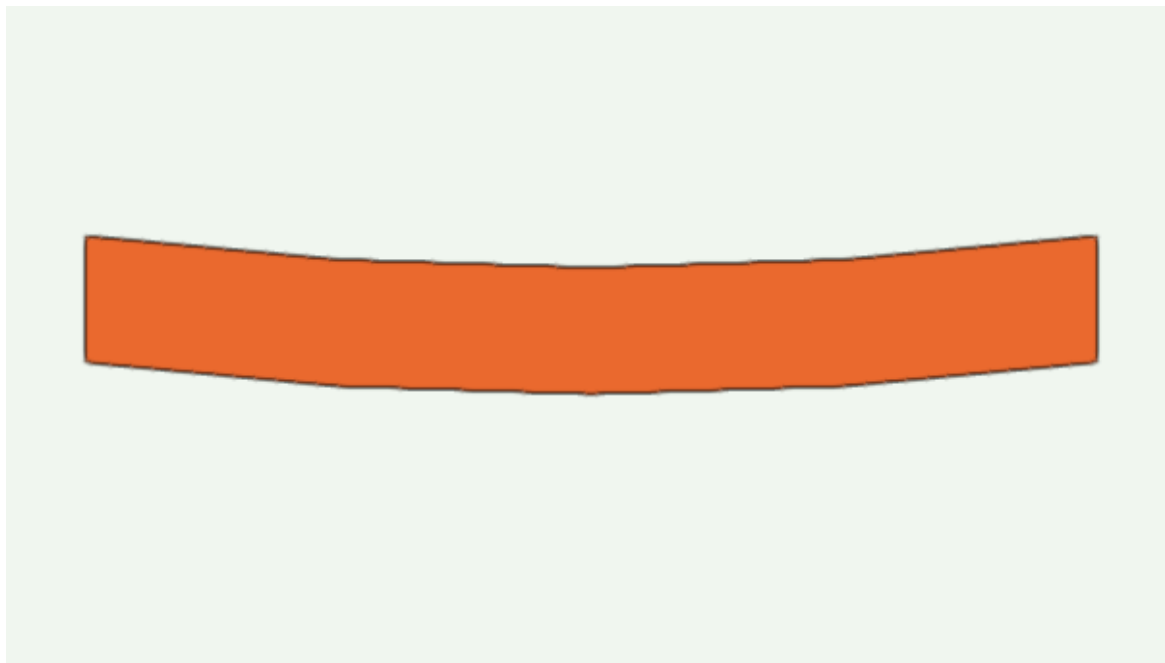
<i>Item/Material</i>	<i>Amount</i>	<i>Price per Item</i>	<i>Total Price</i>	<i>Notes</i>
Flats				
4'x14' Flat	2	\$0.00	\$0.00	
3'x12' Flat	2	\$0.00	\$0.00	
4'x8' Flat	2	\$0.00	\$0.00	
Lauan	5	\$27.38	\$136.90	
3/4" Ply	5	\$33.58	\$167.90	
1x3x8'	10	\$2.22	\$22.20	
Jacks				
Metal Jacks	6	\$0.00	\$0.00	
TOTAL			\$327.00	might not have to build all flats support form behind
10% Contingency			\$32.70	
TOTAL WITH CONTINGENCY			\$359.70	



Bright Star	
By Steve Martin and Edie Brickell	
Director: Kristine Holtvedt	Technical Director: Ellen McLean
Scenic Designer: Sydney Hagen	Assistant Technical Director: Elle Bishop

6. Banner

<u>Item/Material</u>	<u>Amount</u>	<u>Price per Item</u>	<u>Total Price</u>	<u>Notes</u>
Banner				
Muslin	1	\$12.40	\$12.40	
Rigging				
Aircraft Cable	2	\$0.00	\$0.00	Stock
Shackles	4	\$0.00	\$0.00	Stock
Turn Buckles	2	\$0.00	\$0.00	Stock
Chain	2	\$0.00	\$0.00	Stock
TOTAL			\$12.40	
10% Contingency			\$1.24	
TOTAL WITH CONTINGENCY			\$13.64	



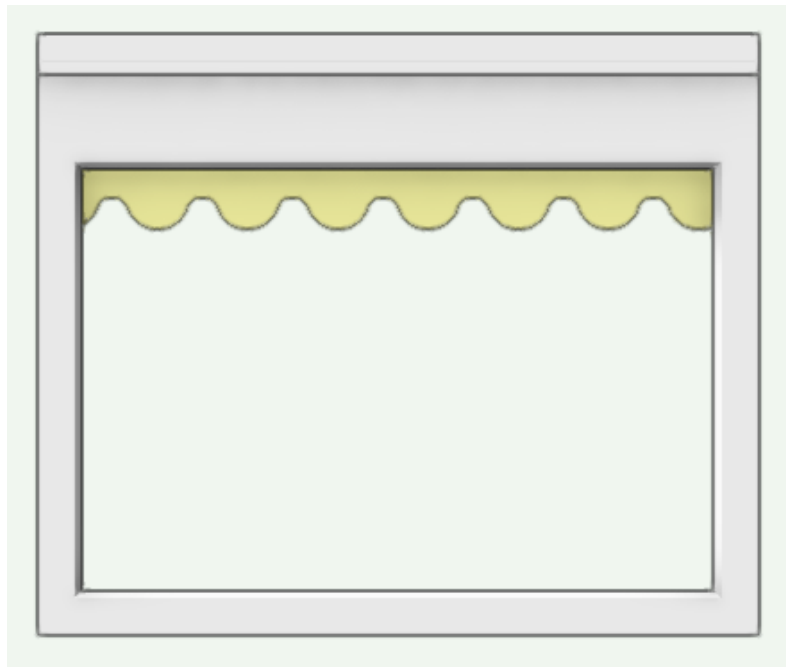
Bright Star	
By Steve Martin and Edie Brickell	
Director: Kristine Holtvedt	Technical Director: Ellen McLean
Scenic Designer: Sydney Hagen	Assistant Technical Director: Elle Bishop

7. Train (ATD Project)				
<u>Item/Material</u>	<u>Amount</u>	<u>Price per Item</u>	<u>Total Price</u>	<u>Notes</u>
Frame				
2x6	2	\$5.35	\$10.70	
Masonite		\$0.00	\$0.00	Stock
1/2" Plywood		\$0.00	\$0.00	Stock
2" Foamboard		\$0.00	\$0.00	Stock
Simulfa		\$0.00	\$0.00	Stock
2x4	1	\$3.28	\$3.28	
Railing				
3D printing		\$0.00	\$0.00	Stock
1" Wood dowels	9	\$4.88	\$43.92	
1/2" Wood dowels	6	\$2.78	\$16.68	
1/2" MDF	1	\$0.00	\$0.00	Stock
Rigging				
Aircraft Cable		\$0.00	\$0.00	Stock
Hardware		\$0.00	\$0.00	Stock
TOTAL			\$74.58	
10% Contingency			\$7.46	
TOTAL WITH CONTINGENCY			\$82.04	

<i>Bright Star</i>	
By Steve Martin and Edie Brickell	
Director: Kristine Holtvedt	Technical Director: Ellen McLean
Scenic Designer: Sydney Hagen	Assistant Technical Director: Elle Bishop

8. Bookshop Window

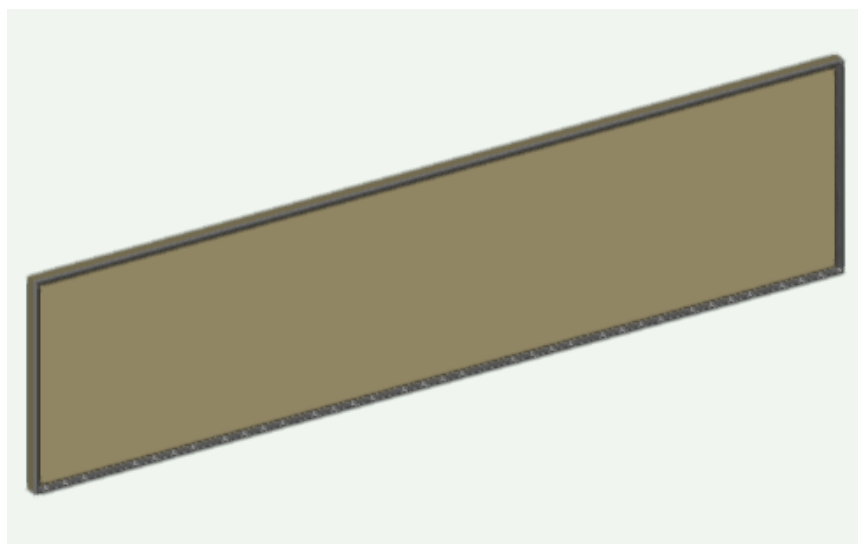
<u>Item/Material</u>	<u>Amount</u>	<u>Price per Item</u>	<u>Total Price</u>	<u>Notes</u>
Window				
3/4" MDF	1	\$55.98	\$55.98	
Scenery Netting	1	\$39.85	\$39.85	
Rigging				
Aircraft Cable	2	\$0.00	\$0.00	Stock
Shackles	4	\$0.00	\$0.00	Stock
Turn Buckles	2	\$0.00	\$0.00	Stock
Chain	2	\$0.00	\$0.00	Stock
TOTAL			\$55.98	
10% Contingency			\$5.60	
TOTAL WITH CONTINGENCY			\$61.58	



Bright Star	
By Steve Martin and Edie Brickell	
Director: Kristine Holtvedt	Technical Director: Ellen McLean
Scenic Designer: Sydney Hagen	Assistant Technical Director: Elle Bishop

9. ASJ Sign

<u>Item/Material</u>	<u>Amount</u>	<u>Price per Item</u>	<u>Total Price</u>	<u>Notes</u>
Sign				
3/4" MDF	1	\$55.98	\$55.98	
Rigging				
Aircraft Cable	2	\$0.00	\$0.00	Stock
Shackles	4	\$0.00	\$0.00	Stock
Turn Buckles	2	\$0.00	\$0.00	Stock
Chain	2	\$0.00	\$0.00	Stock
TOTAL			\$55.98	
10% Contingency			\$5.60	
TOTAL WITH CONTINGENCY			\$61.58	



Bright Star	
By Steve Martin and Edie Brickell	
Director: Kristine Holtvedt	Technical Director: Ellen McLean
Scenic Designer: Sydney Hagen	Assistant Technical Director: Elle Bishop

10. Counter

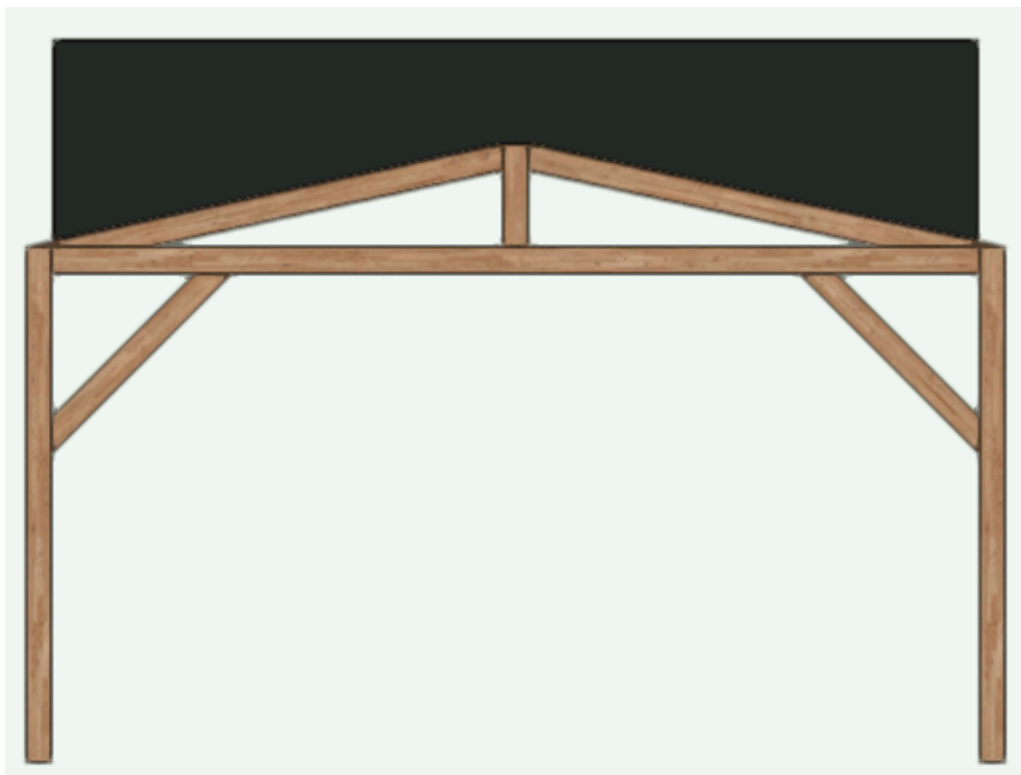
<u>Item/Material</u>	<u>Amount</u>	<u>Price per Item</u>	<u>Total Price</u>	<u>Notes</u>
3/4" Ply ACX	5	\$61.98	\$309.90	
Masonite	1	\$22.98	\$22.98	
MDF	1	\$55.98	\$55.98	Look at premade trim 1x4?
Casters	6	\$0.00	\$0.00	Stock
Breaks	2	\$0.00	\$0.00	Stock
TOTAL			\$332.88	
10% Contingency			\$33.29	
TOTAL WITH CONTINGENCY			\$366.17	



Bright Star	
By Steve Martin and Edie Brickell	
Director: Kristine Holtvedt	Technical Director: Ellen McLean
Scenic Designer: Sydney Hagen	Assistant Technical Director: Elle Bishop

11. Frame 1

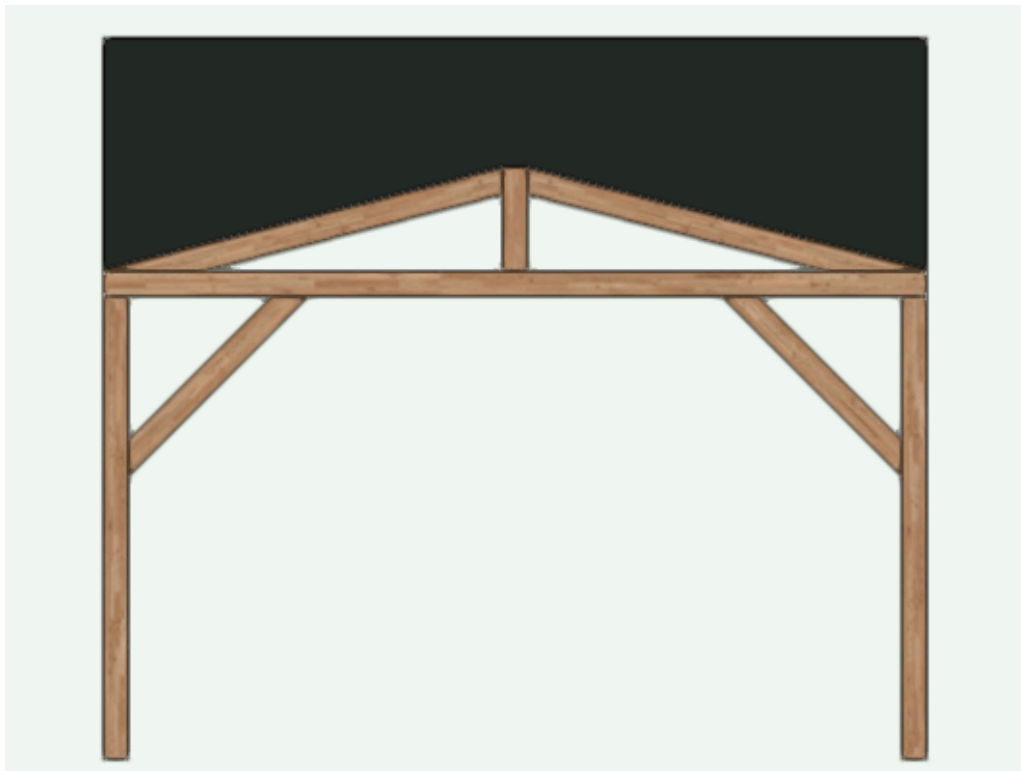
<u>Item/Material</u>	<u>Amount</u>	<u>Price per Item</u>	<u>Total Price</u>	<u>Notes</u>
Frame				
3/4" Ply	10	\$33.58	\$335.80	
Rigging				
Aircraft Cable	2	\$0.00	\$0.00	Stock
Shackles	4	\$0.00	\$0.00	Stock
Turn Buckles	2	\$0.00	\$0.00	Stock
Chain	2	\$0.00	\$0.00	Stock
TOTAL			\$335.80	
10% Contingency			\$33.58	
TOTAL WITH CONTINGENCY			\$369.38	



<i>Bright Star</i>	
By Steve Martin and Edie Brickell	
Director: Kristine Holtvedt	Technical Director: Ellen McLean
Scenic Designer: Sydney Hagen	Assistant Technical Director: Elle Bishop

12. Frame 2

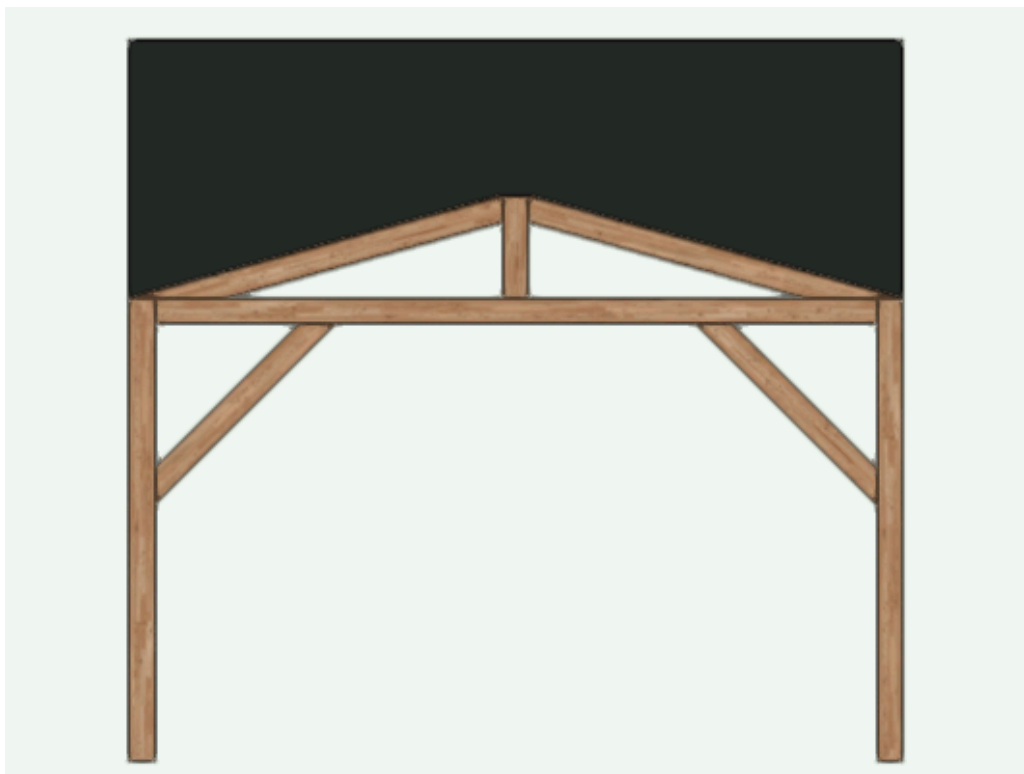
<u>Item/Material</u>	<u>Amount</u>	<u>Price per Item</u>	<u>Total Price</u>	<u>Notes</u>
Frame				
3/4 Ply	8	\$33.58	\$268.64	
Rigging				
Aircraft Cable		\$0.00	\$0.00	Stock
Shackles		\$0.00	\$0.00	Stock
Turn Buckles		\$0.00	\$0.00	Stock
Chain		\$0.00	\$0.00	Stock
TOTAL			\$268.64	
10% Contingency			\$26.86	
TOTAL WITH CONTINGENCY			\$295.50	



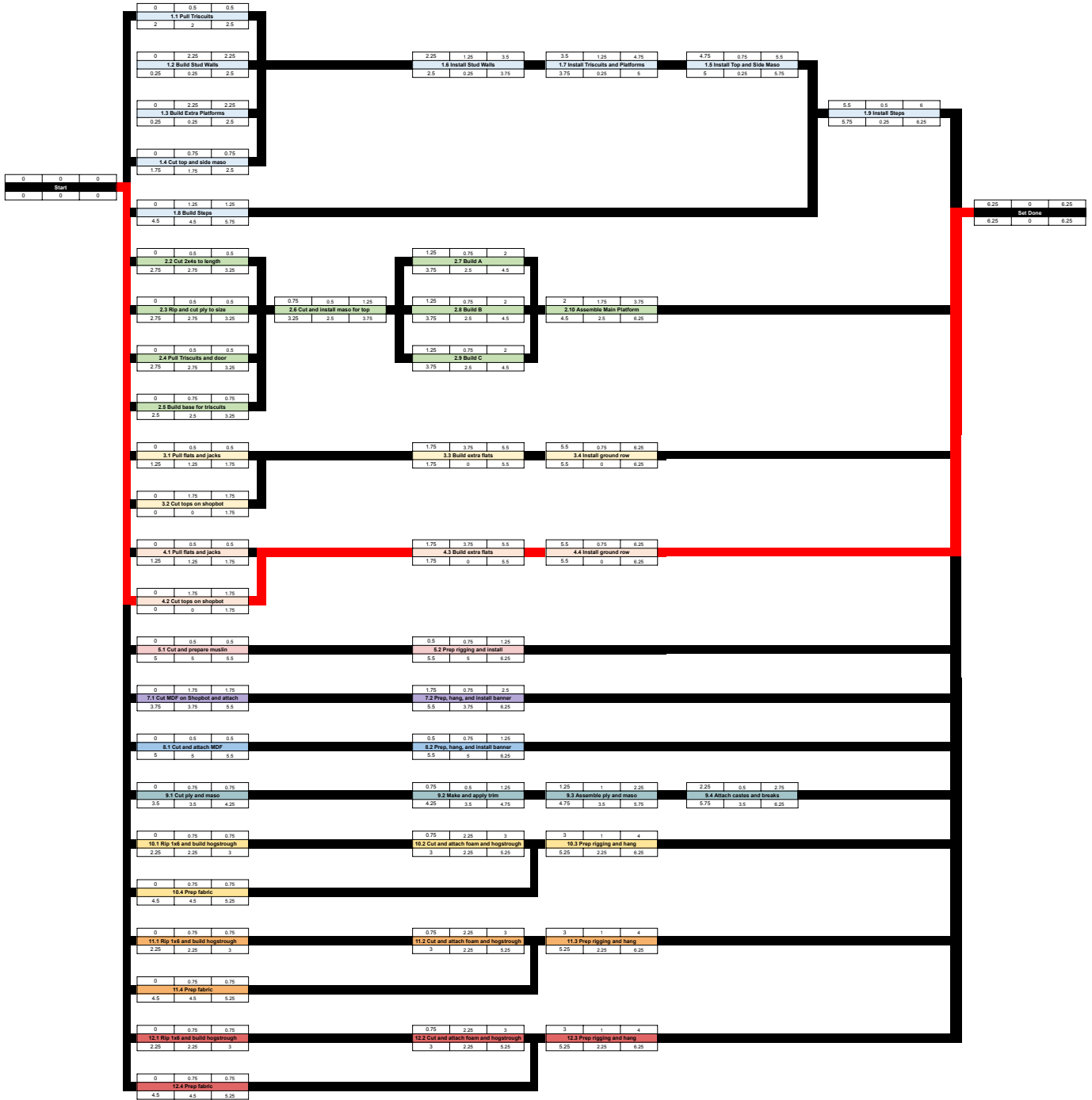
<i>Bright Star</i>	
By Steve Martin and Edie Brickell	
Director: Kristine Holtvedt	Technical Director: Ellen McLean
Scenic Designer: Sydney Hagen	Assistant Technical Director: Elle Bishop

13. Frame 3

<u>Item/Material</u>	<u>Amount</u>	<u>Price per Item</u>	<u>Total Price</u>	<u>Notes</u>
Frame				
3/4" Ply	7	\$33.58	\$235.06	
Rigging				
Aircraft Cable		\$0.00	\$0.00	Stock
Shackles		\$0.00	\$0.00	Stock
Turn Buckles		\$0.00	\$0.00	Stock
Chain		\$0.00	\$0.00	Stock
TOTAL			\$235.06	
10% Contingency			\$23.51	
TOTAL WITH CONTINGENCY			\$258.57	



Node ID	Name	Optimistic Time	Most Likely Time	Pessimistic Time	PERT Time	Efficiency Mod
1 Band Platform						
						1.5
1.1	Pull triscuits	0.25	0.25	0.5	0.44	
1.2	Build stud walls	1	1.5	2	2.25	
1.3	Build extra platforms	0.75	1.5	2	2.19	
1.4	Cut top and side maso	0.25	0.5	0.75	0.75	
1.5	Install top and side maso	0.25	0.5	0.75	0.75	
1.6	Install sud walls	0.25	0.75	1	1.06	
1.7	Install triscuits and platforms	0.25	0.5	1	0.81	
1.8	Build steps	0.25	0.5	0.75	0.75	
1.9	Install steps	0.25	0.25	0.5	0.44	
2 Main Platform						
						1.5
2.2	Cut 2x4s to length	0.25	0.25	0.5	0.44	
2.3	Rip and cut ply to size	0.25	0.25	0.5	0.44	
2.4	Pull triscuits and door	0.25	0.25	0.5	0.44	
2.5	Build base for triscuits	0.25	0.5	0.75	0.75	
2.6	Cut and install maso for top	0.25	0.25	0.5	0.44	
2.7	Build A	0.25	0.5	0.75	0.75	
2.8	Build B	0.25	0.5	0.75	0.75	
2.9	Build C	0.25	0.5	0.75	0.75	
2.10	Assemble Main Platfrom	0.75	1	1.5	1.56	
3 Mountain Groundrow						
						1.5
3.1	Pull flats and jacks	0.25	0.25	0.5	0.44	
3.2	Cut tops on Shopbot	0.5	1	2	1.63	
3.3	Build extra flats	2	2.5	3	3.75	
3.4	Install ground row	0.25	0.5	0.75	0.75	
4 Tree Groundrow						
						1.5
4.1	Pull flats and jacks	0.25	0.25	0.5	0.44	
4.2	Cut tops on Shopbot	0.5	1	2	1.63	
4.3	Build extra flats	2	2.5	3	3.75	
4.4	Install ground row	0.25	0.5	0.75	0.75	
5 Banner						
						1.5
5.1	Cut and prepare muslin	0.25	0.25	0.5	0.44	
5.2	Prep rigging and install	0.25	0.5	0.75	0.75	
6 Train						
						1.5
	Glue foam boards together				1.50	
	Cut full top part				0.50	
	Trim/clean up/finish top part				0.25	
	Cut maso facing				0.25	
	Cut dowels to length				0.25	
	Drill holes in dowels				0.25	
	Print railing pieces				1.25	
	Sand/wood filler finish 3D pieces				1.00	
	Cut sign				0.25	
	Assemble structure				0.25	
	Assemble railing				2.25	
	Attatch top				1.50	
	Attatch hanging hardware, etc.				0.25	
					9.75	
7 Bookshop Window						
						1.5
7.1	Cut MDF on showbot and attach	0.75	1	2	1.69	
7.2	Prep, hang, and install banner	0.25	0.5	0.75	0.75	
8 ASJ Sign						
						1.5
8.1	Cut and attach MDF	0.25	0.25	0.75	0.50	
8.2	Prep, hang, and install banner	0.25	0.5	0.75	0.75	
9 Counter						
						1.5
9.1	Cut ply and maso	0.25	0.5	0.75	0.75	
9.2	Make and apply trim	0.25	0.25	0.5	0.44	
9.3	Assemble ply and maso	0.25	0.5	1	0.81	
9.4	Attach casters and breaks	0.25	0.25	0.5	0.44	
10 Frame 1						
						1.5
10.1	Rip 1x6 to 1x3 and build hogs trough	0.25	0.5	0.75	0.75	
10.2	Cut and Attach foam and hogs trough	0.75	1.5	2	2.19	
10.3	Prep rigging and hang	0.5	0.75	1.25	1.19	
10.4	Prep fabric	0.25	0.5	0.75	0.75	
11 Frame 2						
						1.5
11.1	Rip 1x6 to 1x3 and build hogs trough	0.25	0.5	0.75	0.75	
11.2	Cut and Attach foam and hogs trough	0.75	1.5	2	2.19	
11.3	Prep rigging and hang	0.5	0.75	1.25	1.19	
11.4	Prep fabric	0.25	0.5	1.5	0.94	
12 Frame 3						
						1.5
12.1	Rip 1x6 to 1x3 and build hogs trough	0.25	0.5	0.75	0.75	
12.2	Cut and Attach foam and hogs trough	0.75	1.5	2	2.19	
12.3	Prep rigging and hang	0.5	0.75	1.25	1.19	
12.4	Prep fabric	0.25	0.5	0.75	0.75	
TOTAL:					72.06	



GANTT CHART

