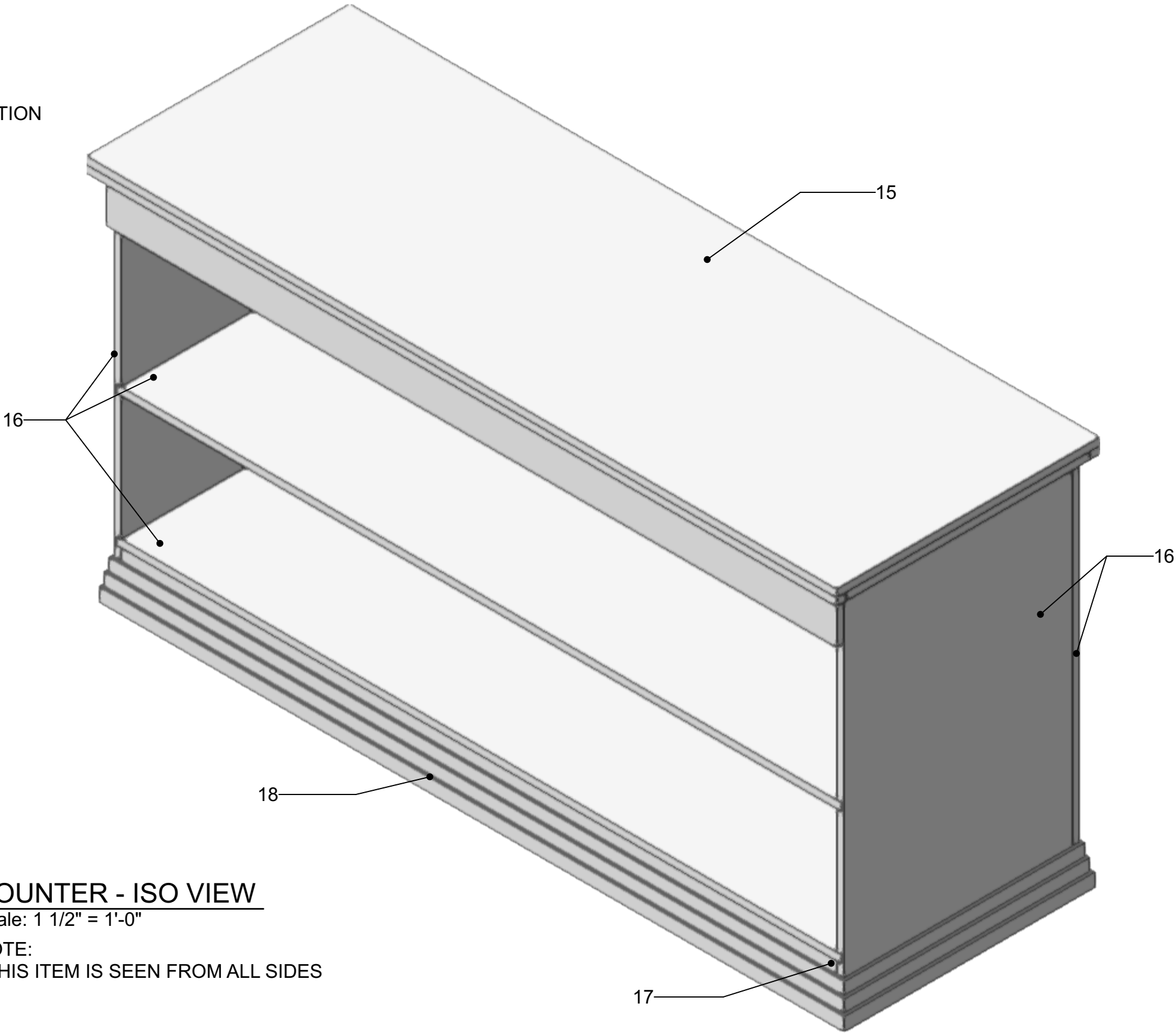


SHEET 14 - OVERVIEW  
SHEET 15 - TOP  
SHEET 16 - SIDES AND SHELVES  
SHEET 17 - BOTTOM  
SHEET 18 - TRIM AND FULL CONSTRUCTION



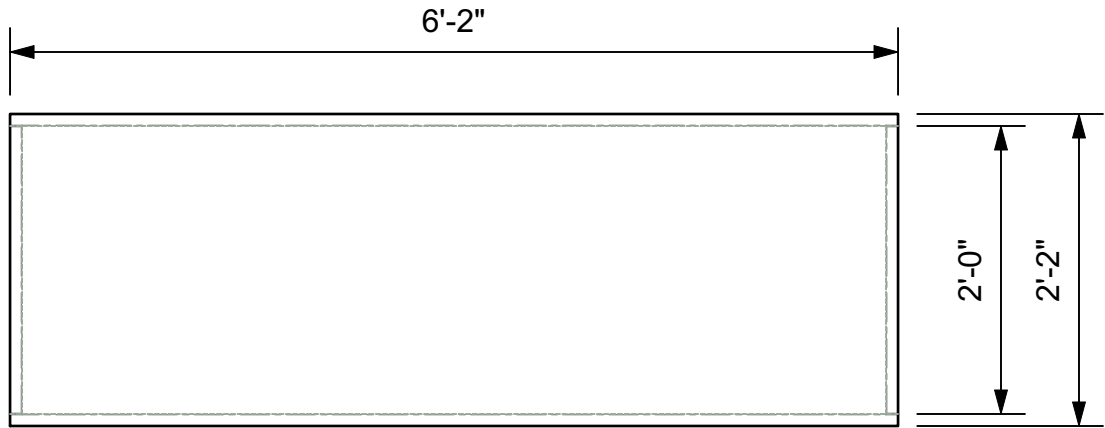
1 COUNTER - ISO VIEW  
Scale: 1 1/2" = 1'-0"  
NOTE:  
- THIS ITEM IS SEEN FROM ALL SIDES

PURDUE  
THEATRE  
HANSEN THEATRE

BRIGHT STAR	SCALE: AS NOTED
	COUNTER - OVERVIEW

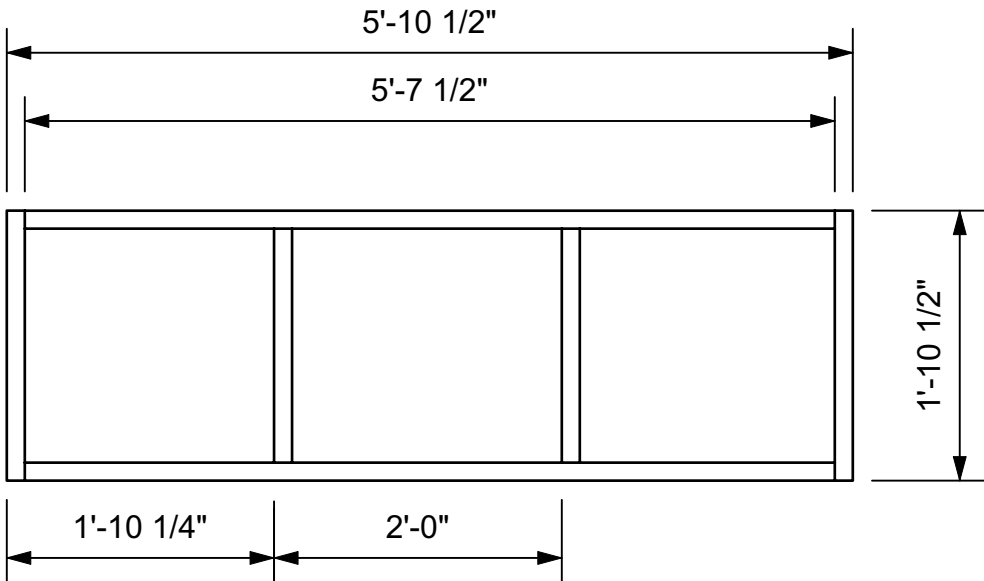
DIRECTOR
KRISTINE HOLTVEDT
SCENIC DESIGNER
SYDNEY HAGEN
TECHNICAL DIRECTOR
ELLEN MCLEAN
ASST. TECHNICAL DIRECTOR
ELLE BISHOP
DATE
12/3/23

SHEET
14
OF 55



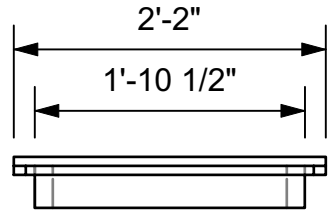
1 COUNTER LID - TOP VIEW

Scale: 3/4" = 1'-0"  
NOTES:  
- CUT FROM 3/4" PLY  
- GLUE AND STAPLE BOTTOM PLY PEICES TO TOP PLY PEICE  
- USE ROUNDOVER BIT IN ROUTER ALONG ALL EDGES



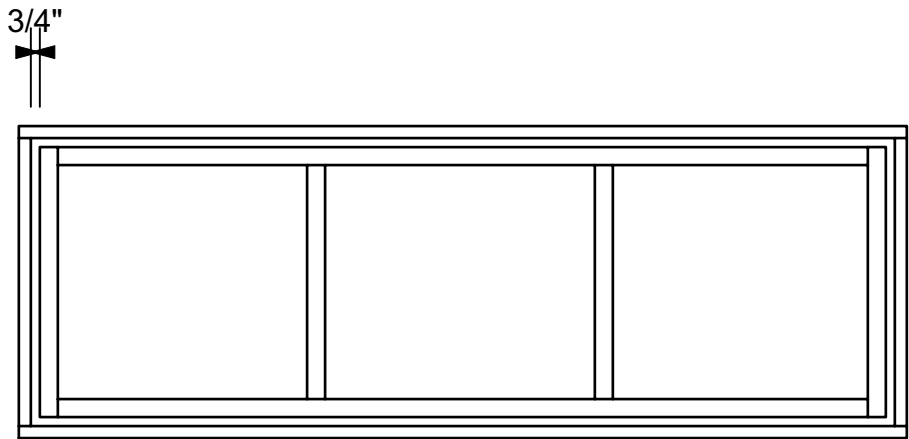
3 COUNTER TOP FRAME - BOTTOM VIEW

Scale: 3/4" = 1'-0"  
NOTES:  
- FRAME IS ATTACHED TO FRAME WITH GLUE AND SCREWS  
- FRAME IS MADE WITH 2X4



2 COUNTER - SIDE VIEW

Scale: 3/4" = 1'-0"



4 COUNTER TOP - BOTTOM VIEW

Scale: 3/4" = 1'-0"  
NOTE:  
- THE FRAME IS INSET IN THE INSIDE LIP OF THE TOP BY 3/4" ON EACH SIDE

PURDUE  
THEATRE

HANSEN THEATRE

BRIGHT STAR

SCALE: 3/4"=1'-0"

COUNTER -  
TOP

DIRECTOR

KRISTINE  
HOLTVEDT

SCENIC DESIGNER

SYDNEY  
HAGEN

TECHNICAL DIRECTOR

ELLEN  
MCLEAN

ASST. TECHNICAL  
DIRECTOR

ELLE  
BISHOP

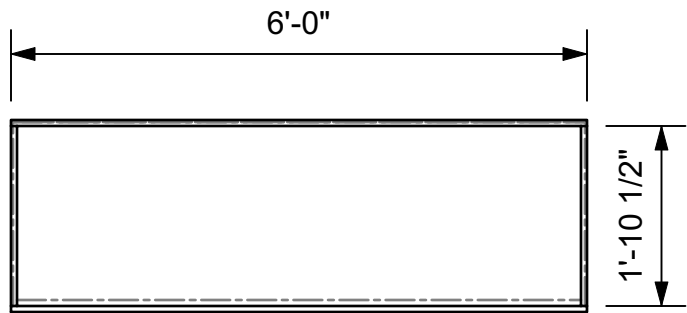
DATE

12/3/23

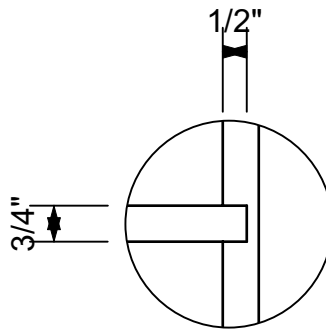
SHEET

15

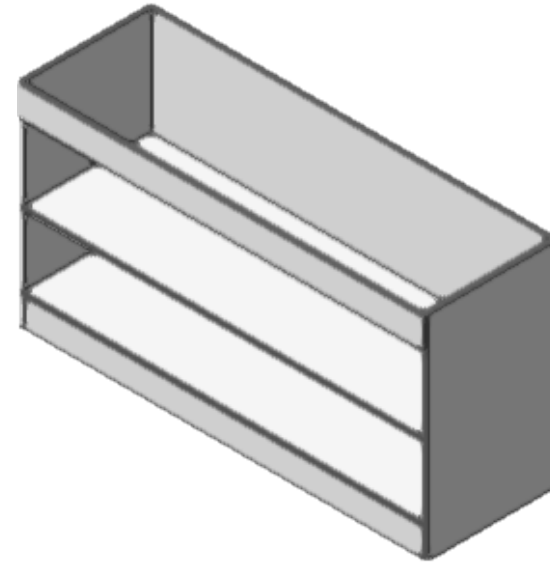
OF 55



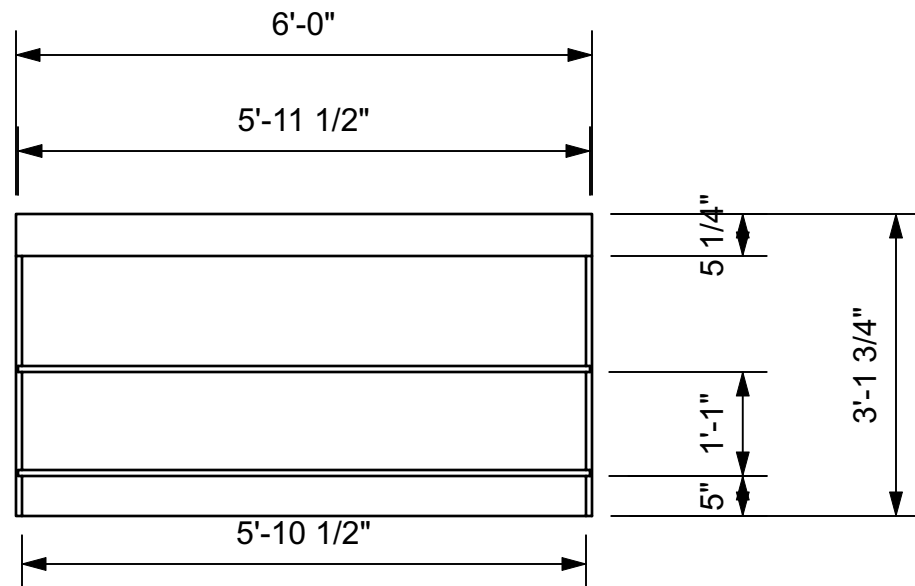
1 **TOP VIEW**  
Scale: 1/2" = 1'-0"  
NOTES:  
- CUT ALL PEICE OUT OF 3/4" PLY



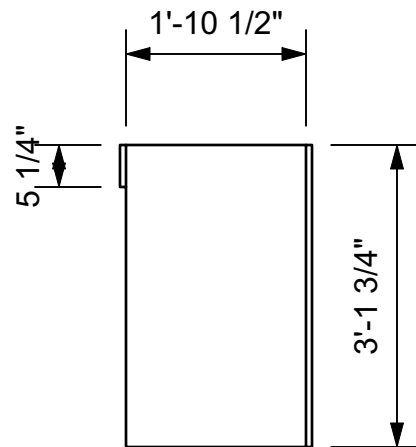
2 **DATO DETAILS**  
Scale: 3" = 1'-0"  
NOTES:  
- DATOS SHOULD BE MADE INTO THE SIDES AND BACK PEICES AT BOTH SHELF HEIGHTS



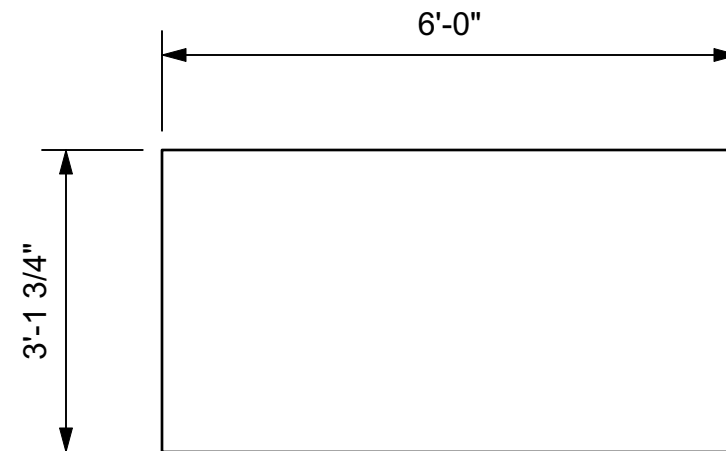
3 **ISO VIEW**  
Scale: 1/2" = 1'-0"



4 **FRONT VIEW**  
Scale: 1/2" = 1'-0"



5 **SIDE VIEW**  
Scale: 1/2" = 1'-0"



6 **BACK VIEW**  
Scale: 1/2" = 1'-0"

PURDUE  
THEATRE  
HANSEN THEATRE

**BRIGHT STAR**

SCALE: AS NOTED  
COUNTER -  
SIDES AND  
SHELVES

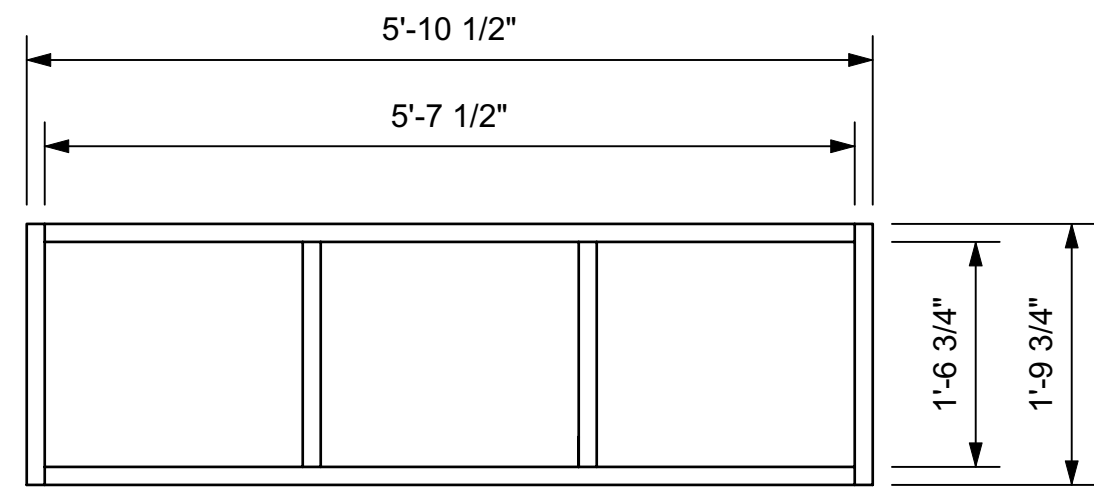
DIRECTOR  
KRISTINE  
HOLTVEDT  
SCENIC DESIGNER  
SYDNEY  
HAGEN  
TECHNICAL DIRECTOR  
ELLEN  
MCLEAN  
ASST. TECHNICAL  
DIRECTOR  
ELLE  
BISHOP

DATE  
12/3/23

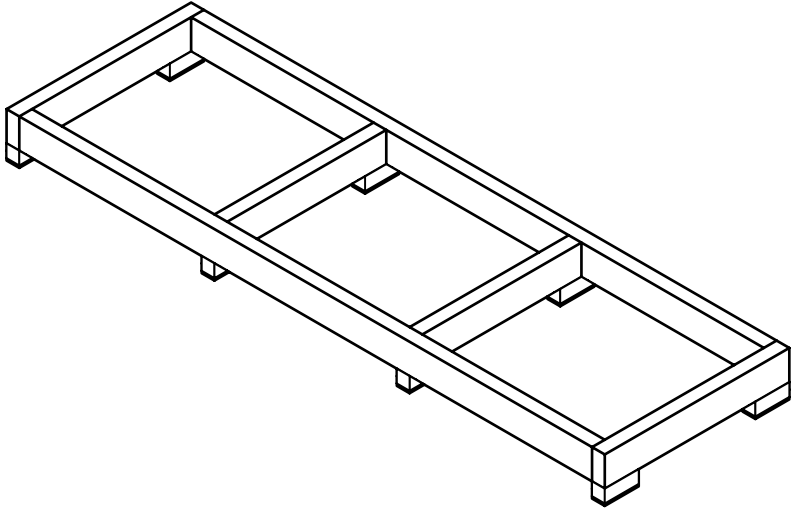
SHEET

16

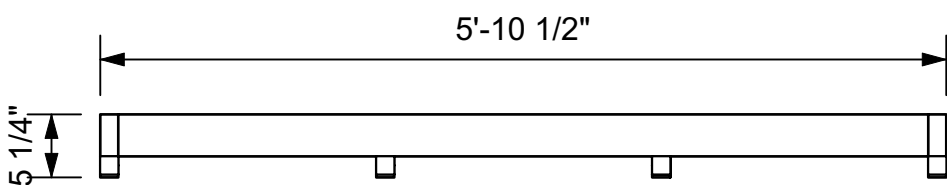
OF 55



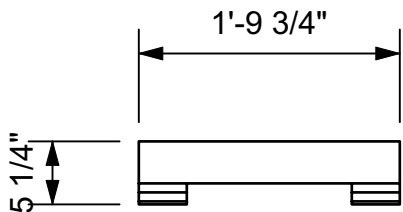
1 **TOP VIEW**  
Scale: 3/4" = 1'-0"  
NOTES:  
- FRAME IS BUILD WITH 2X4  
- GLUE AND SCREW



2 **ISO VIEW**  
Scale: 3/4" = 1'-0"



3 **FRONT VIEW**  
Scale: 3/4" = 1'-0"  
NOTES:  
- LEGS ARE RIPPED DOWN 2X4 TO 1 1.2"X1 1/2" ACTUAL  
- UPOND EACHOTHER WITH UHMW ATTACH TO BOTTOM OF EACH LEG



4 **SIDE VIEW**  
Scale: 3/4" = 1'-0"

PURDUE  
THEATRE

HANSEN THEATRE

**BRIGHT STAR**

SCALE: 3/4"=1'-0"

COUNTER -  
BOTTOM

DIRECTOR

KRISTINE  
HOLTVEDT

SCENIC DESIGNER

SYDNEY  
HAGEN

TECHNICAL DIRECTOR

ELLEN  
MCLEAN

ASST. TECHNICAL  
DIRECTOR

ELLE  
BISHOP

DATE

12/3/23

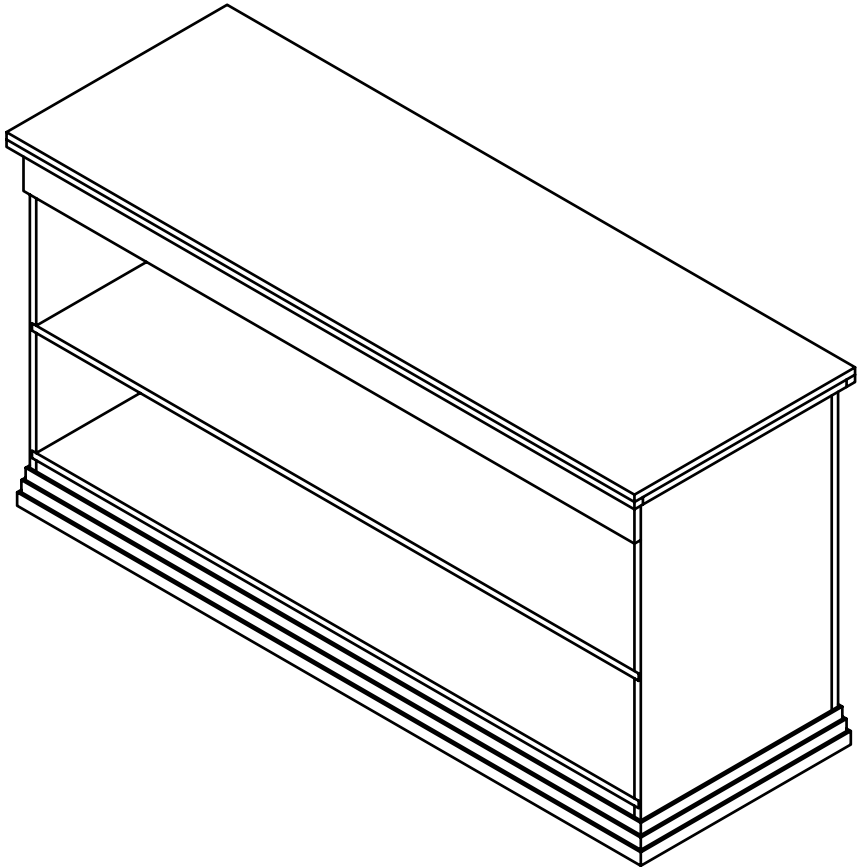
SHEET

17

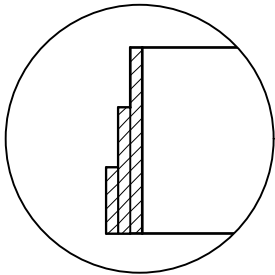
OF 55



1 TOP VIEW  
Scale: 3/4" = 1'-0"

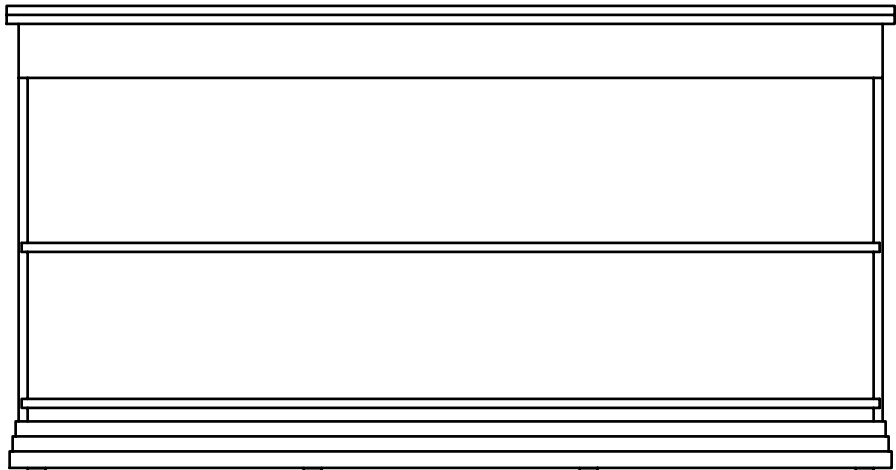


2 ISO VIEW  
Scale: 3/4" = 1'-0"

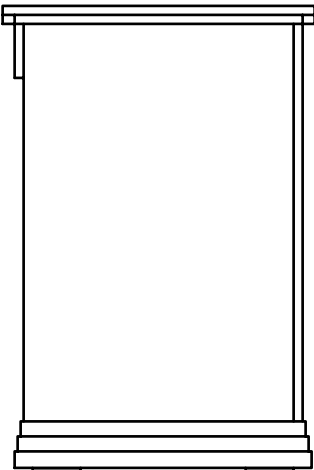


3 BOTTOM TRIM - SECTION VIEW  
Scale: 3" = 1'-0"

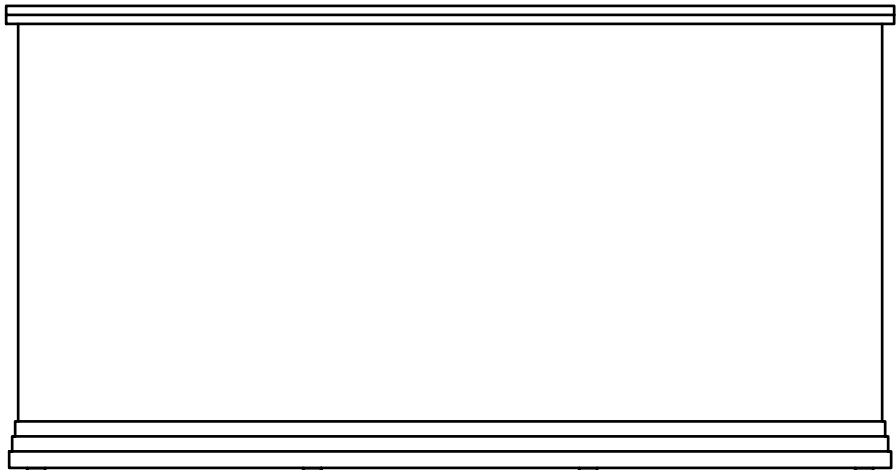
NOTE:  
- BUILD OUT OF 3 LAYERS OF 1/4" MATERIAL  
- FULLY SURROUNDS THE BASE OF THE UNIT



4 FRONT VIEW  
Scale: 3/4" = 1'-0"



5 SIDE VIEW  
Scale: 3/4" = 1'-0"



6 BACK VIEW  
Scale: 3/4" = 1'-0"

PURDUE  
THEATRE

HANSEN THEATRE

**BRIGHT STAR**

SCALE: AS NOTED

COUNTER -  
FULL  
ASSEMBLY

DIRECTOR

KRISTINE  
HOLTVEDT

SCENIC DESIGNER

SYDNEY  
HAGEN

TECHNICAL DIRECTOR

ELLEN  
MCLEAN

ASST. TECHNICAL  
DIRECTOR

ELLE  
BISHOP

DATE

12/3/23

SHEET

18

OF 55